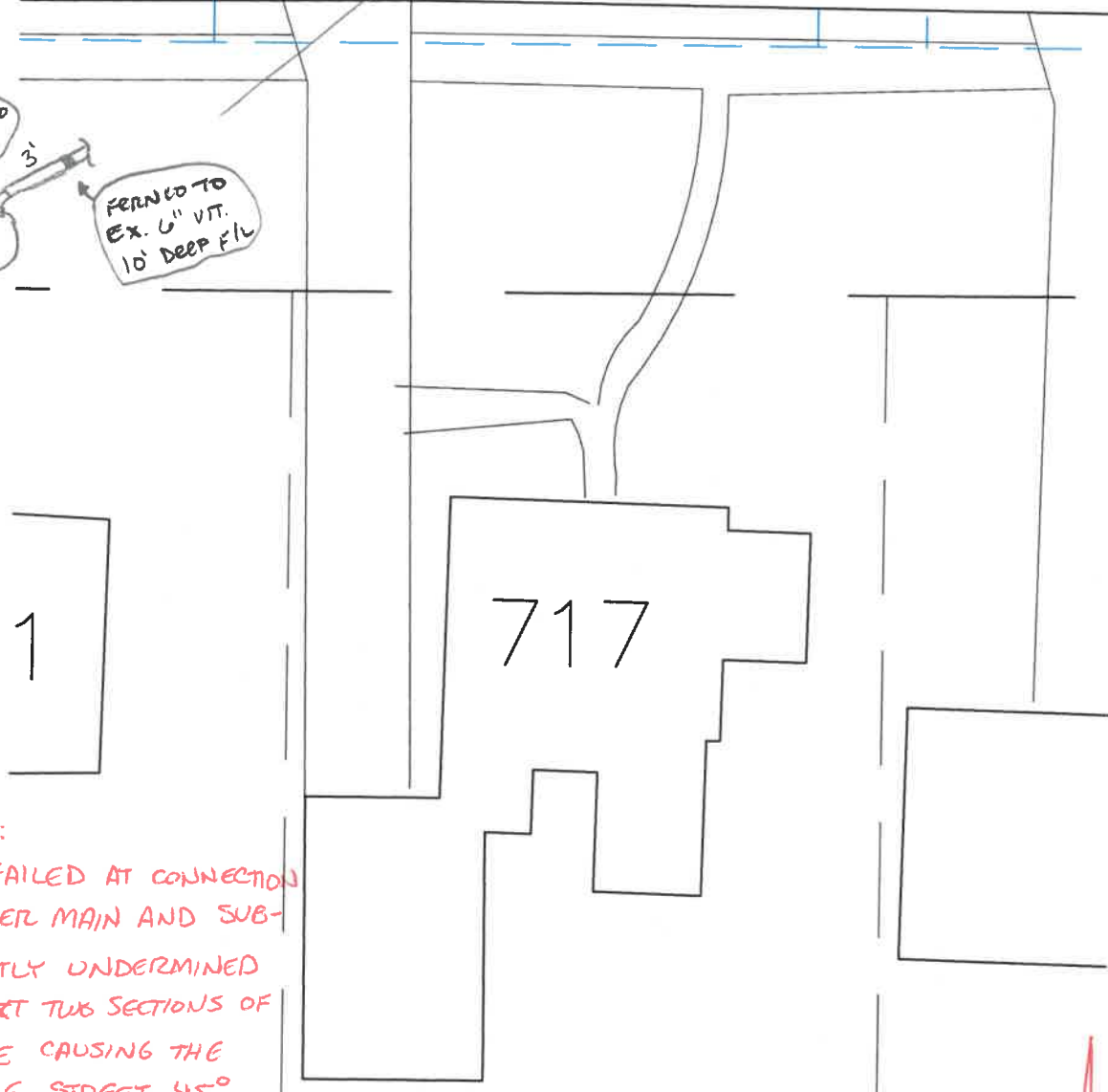


STREET 45°  
11' DEEP F/L



FERNICO TO  
EX. 6" VIT.  
10' DEEP F/L



NOTE:  
TAP FAILED AT CONNECTION  
TO SEWER MAIN AND SUB-  
SEQUENTLY UNDERMINED  
THE NEXT TWO SECTIONS OF  
TAP PIPE CAUSING THE  
SINKHOLE. STREET 45°  
CEMENTED INTO PLACE.

DATE: 8-6-13  
INSTALLED BY: VERNON NAGEL INC.  
INSPECTED BY: MARTY CROSSLAND

